

Shared Governance Organization Chart

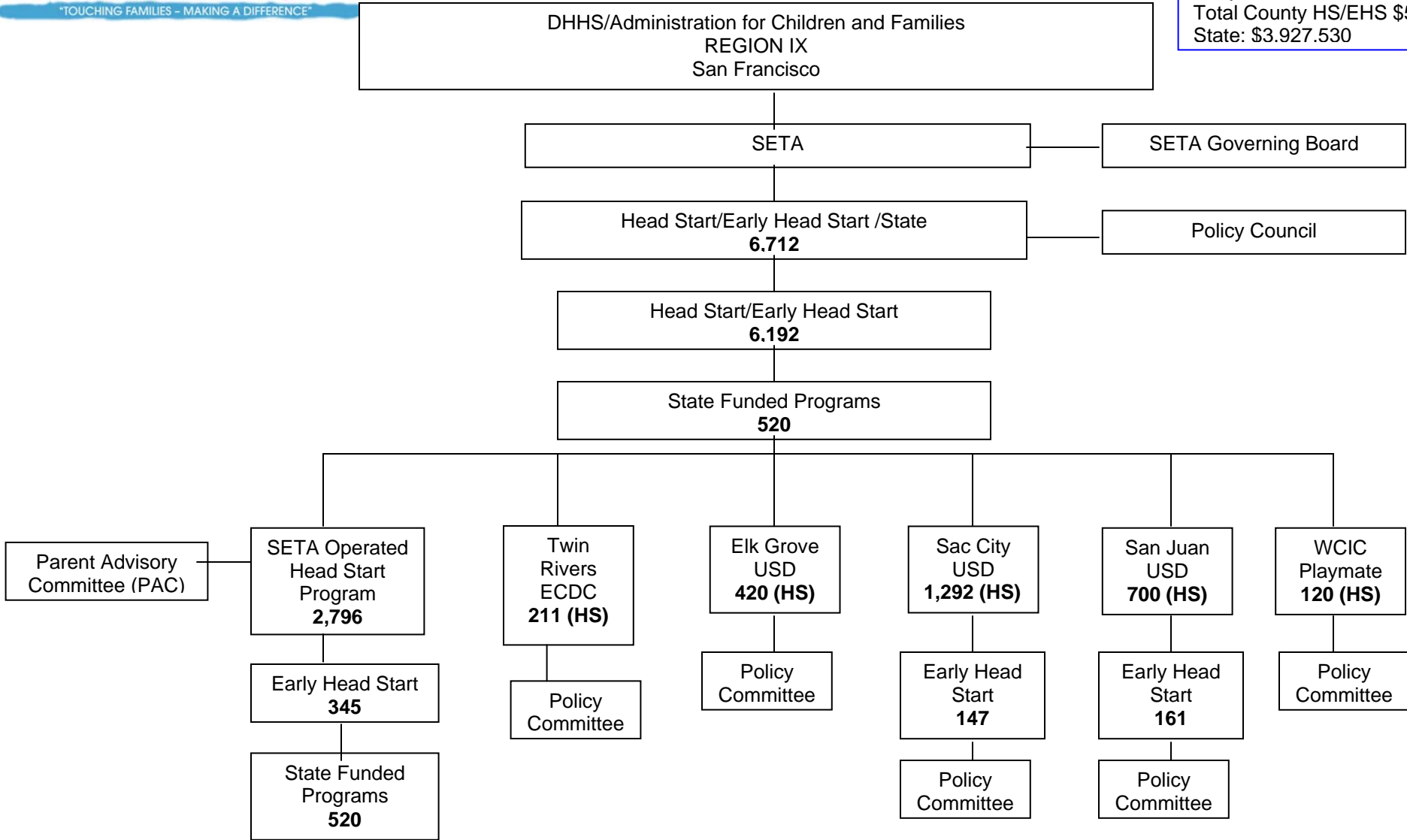


HEAD START

Shared Governance Organization

FY 2009-2010

Head Start: \$45,678,698
 Early Head Start: \$5,322,734
 Total County HS/EHS \$51,001,432
 State: \$3,927,530



Shared decision making involves the Policy Council/Committee, Parent Advisory Committee, SETA Governing Board, Head Start Directors, Executive Director and the Board of Directors or School Board.